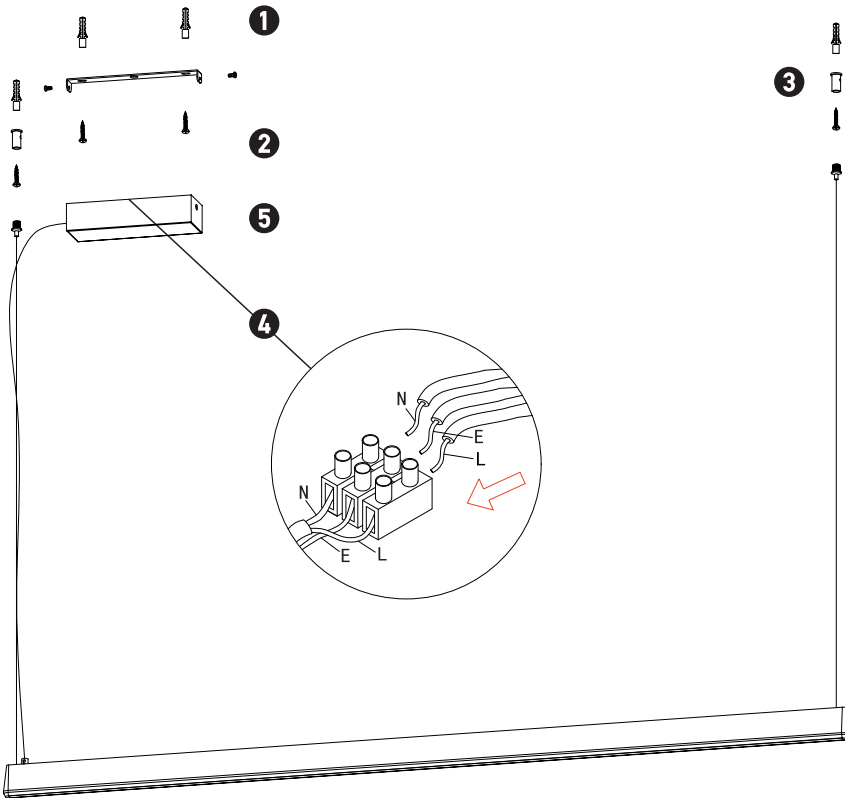
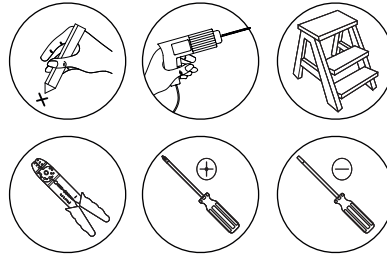
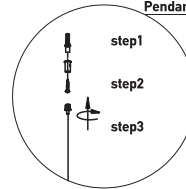


### Connecting the Terminal Block

Connect main supply (**brown - Live, blue - Neutral**) into terminal block making sure all connections are tight.



Pendant Wires Fitting Steps



## INDOOR PENDANT LIGHT

2558

Please read instructions before commencing installation and retain for future reference.

### SPECIFICATIONS

- **Lamp Type:** LED | 42W | 3000K | CRI 90 | Triac
- **Material:** Metal | Aluminium | PVC
- **Ingress Protection:** IP20 Protection against entry of solid objects greater than 12mm in diameter.

### INSTALLATION INSTRUCTIONS



Electrical products can cause death, injury, or property damage. Maintenance and installation should only be carried out by a professional electrician.

- Ensure the main supply is switched off.
- Install the mounting anchors on the ceiling (1).
- Fix the mounting plate using M4 self-tapping screws (2).
- Follow the "Pendant Wires Fitting Steps" diagram to fit the wires with the correct way onto the mounting surface (3).
- Connect the positive and negative ground wires, and connect the power cord (4). Making sure all connections are tight.
- Slide and fix with the sided screws the decorative ceiling cover upward to conceal the wiring and mounting plate (5).
- Reconnect power.

### WARNING



Make sure that the products are installed properly before connecting to electricity. Do not cover the luminaire. Do not exceed the maximum wattage rating of the lamp. If the light source is contained in this luminaire (integrated LED), it shall only be replaced by the manufacturer, his service agent, or a similarly qualified person.



LED

CRI  
90

IP 20

0,5m



CE

